



PRODUCT ANALYSIS SHEET

**Mouse Monoclonal Antibody
Anti- Human PCBP-1**

[Poly(rC) binding protein-1]

A single co-regulator molecule shuttles between nucleus and cytoplasm, controls multiple cellular processes

Anti-PCBP-1 monoclonal antibody is raised against human PCBP-1.

<u>Clone ID:</u>	Alper-pCBP-1
<u>Immunogen:</u>	Native human PCBP-1
<u>Catalog Number:</u>	AB001
<u>Lot Number:</u>	0001
<u>Quantity/Volume:</u>	100 µg / 0.2 ml
<u>Isotype:</u>	IgG1 κ (mouse)
<u>Form of Antibody:</u>	Purified in phosphate buffered saline, pH 7.2
<u>Preservation:</u>	No preservation is added
<u>Purification:</u>	Purified from ascites by protein A/G affinity chromatography
<u>Specificity:</u>	PCBP-1 is a member of PCBP family of proteins which are involved in a wide spectrum of transcriptional and apoptotic pathways. The PCBP-1 protein is shown to express at reduced levels in human metastatic breast cancer cells. (Mol Cell Biol. 2003; 23(11): 3774-87)

Alper Biotech, Llc.

9700 Great Seneca Highway - Rockville, MD 20850-3307 - USA

Phone: +1 301-760-7307 - Fax: +1 301-760-3951

www.alperbiotech.com

This product is for research use only. Not for use in diagnostic procedures.

Species Reactivity: Human. Other species not tested

Applications: This antibody is suitable for use in Western blotting, immunoprecipitation, ELISA, indirect immunofluorescent, flow cytometry.

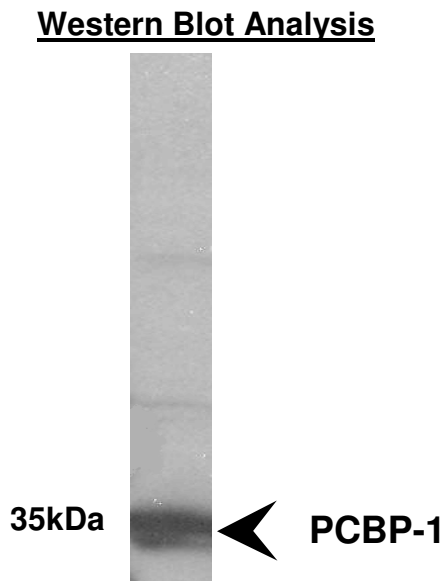
Suggested Working Dilutions:
The optimal antibody concentration should be determined for each specific application.

Recommended Positive Control:
Cell lysate and culture medium of SK-BR-3 cells.

Storage: Store at 4⁰C. For long term storage, aliquot into small volumes and store at -20⁰C. Stable up to 6 times freeze-thaw cycles.

Link:
<http://biomed.ngic.re.kr/cgi-bin/cards/carddisp.pl?gene=PCBP1>

APPLICATIONS



Proteins (300 µg) from the breast carcinoma cell line (SK-BR3) resolved by SDS-PAGE on 4-12% polyacrylamide gel and transferred to PVDF. The membrane was blocked by 5% milk/PBST buffer and incubated with Alper-pCBP-1 at a concentration of 5 µg/ml overnight at 4⁰C in a 5% milk/PBST buffer. After washing, the membrane was incubated with a HRP-conjugated sheep anti-mouse IgG antibody at a 1:3000 dilution. PCBP-1 Band was detected with an ECL kit and Kodak BioMax film.

Alper Biotech, Llc.

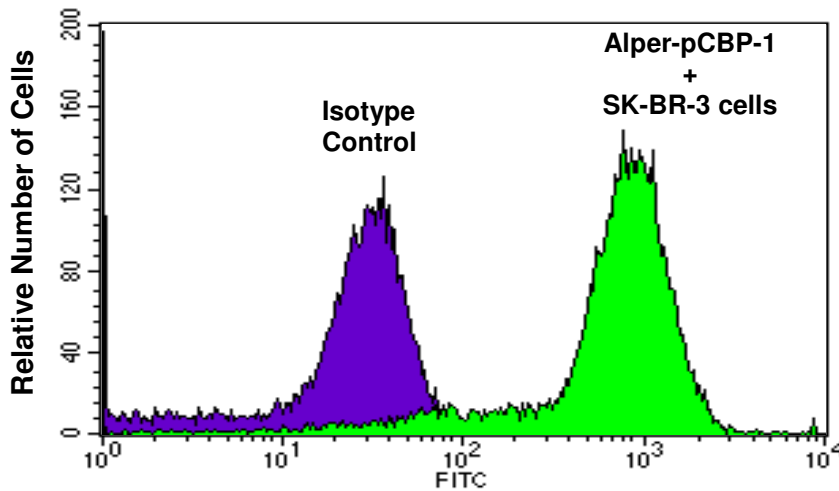
9700 Great Seneca Highway - Rockville, MD 20850-3307 - USA

Phone: +1 301-760-7307 - Fax: +1 301-760-3951

www.alperbiotech.com

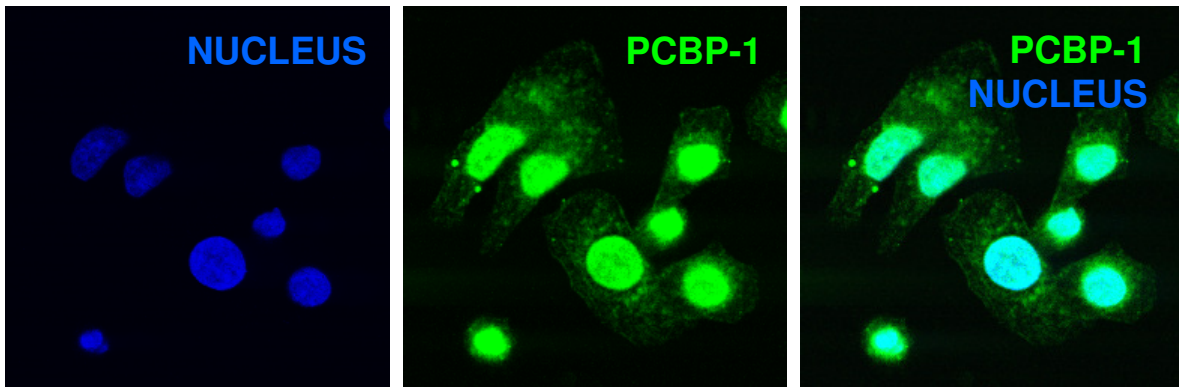
This product is for research use only. Not for use in diagnostic procedures.

FACS Analysis



Single color staining of SK-BR-3, human breast cancer cells: SK-BR-3 cells are fixed with 3.7% formaldehyde, 0.1% TritonX-100 in PBS and incubated with purified mouse anti-human Alper-pCBP-1 (Cat. No. AB001). The cells are then stained with goat anti-mouse IgG1-FITC and analyzed by flow cytometry.

Indirect Immunofluorescence Staining



After SK-BR-3 cells were seeded in chamber slides and incubated at 37°C they were fixed with 3.7% formaldehyde for 10 minutes and permeabilized with 0.1% TritonX-100 for 10 minutes at room temperature. After washing with PBS, the cells were incubated with Alper-pCBP-1 monoclonal antibody in PBS containing 0.1% gelatin and 10% normal donkey serum for 30 minutes at room temperature. Antibody staining was visualized with FITC-labeled anti-mouse secondary antibodies. After nuclear staining with DAPI, the images were analyzed using an Olympus microscope equipped with 63x objective lens.

Nuclear and/or punctuate staining is observed in various cancer cells.

Alper Biotech, Llc.

9700 Great Seneca Highway - Rockville, MD 20850-3307 - USA

Phone: +1 301-760-7307 - Fax: +1 301-760-3951

www.alperbiotech.com

This product is for research use only. Not for use in diagnostic procedures.